



COMMUNITY VOICE

Welcome to the Derbyshire Dales Community Voice Update

LATEST COVID-19 UPDATES:

• Testing in the Derbyshire Dales

Between 8 September 2022 and 14 September 2022, there have been 721 tests. This shows an increase of 1.4% compared to the previous 7 days.

• Cases in Derbyshire Dales

Between 4 September 2022 and 10 September 2022, 0 - 2 people had a confirmed positive test result.

• Vaccinations in Derbyshire Dales

61,625 people had been given a first dose by the end of 14 September 2022.

60,154 people had been given a second dose by the end of 14 September 2022.

52,618 people had been given a booster or third dose by the end of 14 September 2022.

• Healthcare in Chesterfield Royal Hospital NHS Foundation Trust

Between 6 September 2022 and 12 September 2022, 11 went into hospital with coronavirus. This shows an increase of 57.1% compared to the previous 7 days.

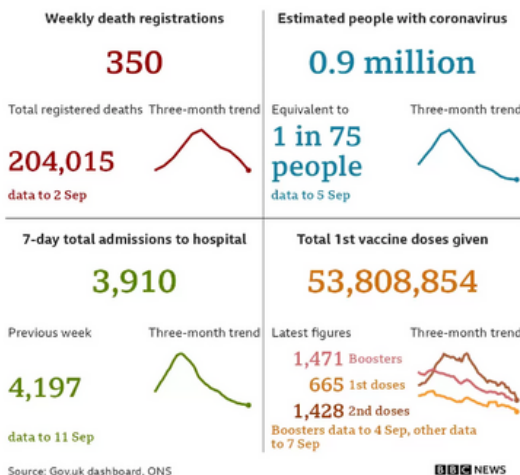
There were 17 patients in hospital with coronavirus on 14 September 2022.

• Deaths in Derbyshire Dales

Between 4 September 2022 and 10 September 2022, there has been 1 death within 28 days of a positive coronavirus test. This shows no change compared to the previous 7 days.

Key statistics from the UK Coronavirus (COVID-19) Dashboard - last updated on Thursday 15 September 2022.

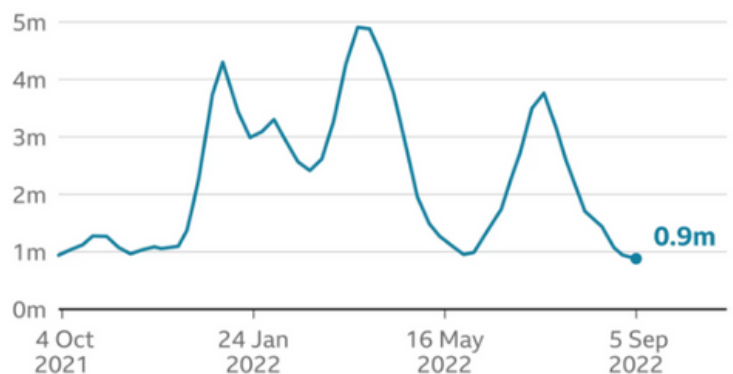
Coronavirus in the UK



[Book or manage a coronavirus \(COVID-19\) vaccination](#)
Use this service to book a 1st, 2nd, 3rd or booster dose of the coronavirus (COVID-19) vaccine or manage an appointment.

UK infections lowest since September 2021

Estimated people testing positive for coronavirus



YOUR HEALTH & WELLBEING - INFORMATION



Derbyshire Carers Association
01773 833 833
info@derbyshirecarers.co.uk
www.derbyshirecarers.co.uk



Carers Networking Event
Friday 18th November @ 10am - 2pm

Carers Networking Event on Friday 18th November @ 10am - 2pm at The Post Mill Centre, Market Street, South Normanton, Derbyshire, DE55 2EJ

This event will give Carers the opportunity to meet organisations which provide vital support and advice across Derbyshire. There will be the chance for Carers to take part in activities, wellbeing workshops and information sessions.

Information sessions will include; Cost of Living Advice, Planning for the Future, Financial Wellbeing and much more! Coffees and cakes will be provided. A full activity programme will be provided on the day.

Carers Training, Breaks and Events – If you are a carer in Derbyshire, please register with Derbyshire Carers Association for access to a full range of training, breaks and events. [See here for details.](#)

Joined Up Care Derbyshire

Research Opportunity

Traverse, Joined Up Care Derbyshire, and the King's Fund are currently looking for people across Derbyshire to part in interviews for a research study.

The health and care system is going through the process of integration, which means that different teams and organisations across health and care will be working together more closely.

We want to understand how to measure whether integration is resulting in better experiences for service users and carers. We want to make sure we're asking the right questions, in the right way, so that the experiences of those people that integration affects are listened to.

For us to understand more about your experiences, we would like to invite you to take part in a one-to-one interview with a researcher. In the interview, we will be asking you questions about what good health and care would look like to you, and questions about your experiences giving feedback to health and care services.

We are urgently trying to interview people (and carers of people) that:

- are over the age of 75,
- need to access multiple health and care services, or
- are housebound.

The interviews should take 30-40 minutes, and can be done virtually, via Teams or Zoom, or over the phone. As a thank you for your time, we will give you £35 for taking part. More information about the project is available [here.](#)



World Alzheimer's Month is a global opportunity to raise awareness around, educate, encourage support of and demystify dementia.

Support after a dementia diagnosis

There's a lot to think about after receiving a diagnosis of dementia. But you are not alone. Alzheimer's Society can help you adjust to a diagnosis and access support.

Learn about different types of post-diagnosis support

The GP will provide support by offering treatments, referrals, advice and information to manage the condition and live well with dementia.

Dementia Friendly Fully Accessible Walks for All

Walking Works! Walking is for everyone. It's free, simple and gentle on the body. You can do it on these short, very easy, fully accessible wheelchair friendly walks. Derbyshire Dales District Council Health Walks are working in partnership with the Peak District National Park and the Alzheimer's Society.



Very Easy Dementia Friendly walks

These easy walks will enable those living with dementia and carers supporting loved ones to enjoy meeting up, being outdoors and sharing your experiences. If you need someone to support you please don't come on your own as unfortunately we can't offer any additional support.



What you can expect!

- Walks led by trained Walk Leaders who have a good understanding of dementia
- Length and pace of walk designed for you (15–60 mins)
- Enjoy a cup of tea, piece of cake and a good chat afterwards



Walks are on Tuesdays at 2pm - No need to book, just turn up
Two Different Fully Accessible Locations

We have 2 locations both offering a wonderful café at the end :-
1- Tues of month : Darley Dale—Meet at the **Whitworth Centre War Memorial** (by car park) for a short walk around the beautiful park (Pay and Display)
3- Tuesday of month : Bakewell—Meet at **Hassop Station** for a short walk along the Monsal Trail with Peak Park Rangers. (Pay and Display)

	Darley Dale	Hassop Station
October	4 th at 2pm	18 th at 2pm
November	1 st at 2pm	15 th at 2pm
December	6 th at 2pm	20 th at 2pm



Visit our website for more detailed information

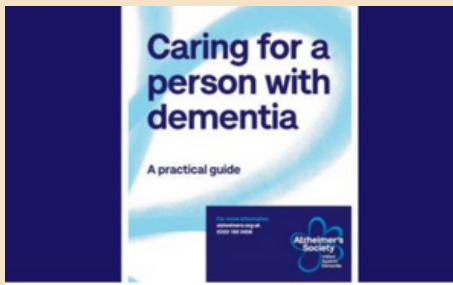
www.derbyshiredales.gov.uk/healthwalks

For more information please contact Helen Milton

Tel: 01629 761194 or email [Helen](mailto:helen.milton@derbyshiredales.gov.uk) helen.milton@derbyshiredales.gov.uk




The dementia guide: Living well after your diagnosis



Caring for a person with dementia: A practical guide

Keeping in touch: If you have any questions, ideas or concerns please email: Rachel@ddcvs.org.uk

DDCVS's bulletin is compiled by the staff of DDCVS from a wide range of information. While every effort is made to check the accuracy of the material, no liability can be accepted for any error or omission. Inclusion of an item in the bulletin does not mean approval or recommendation by DDCVS.