



COMMUNITY VOICE

Welcome to the Derbyshire Dales Community Voice Update

LATEST COVID-19 UPDATES:

• Testing in the Derbyshire Dales

Between 20 July 2022 and 26 July 2022, there have been 1,514 tests. This shows a decrease of -10.7% compared to the previous 7 days.

• Cases in Derbyshire Dales

Between 16 July 2022 and 22 July 2022, 9 people had a confirmed positive test result. This shows a decrease of -50.0% compared to the previous 7 days.

• Vaccinations in Derbyshire Dales

61,666 given a first dose by the end of 26 July 2022.
60,133 given a second dose by the end of 26 July 2022.
52,581 given a booster or third dose by the end of 26 July 2022.

• Healthcare in Chesterfield Royal Hospital NHS Foundation Trust

Between 18 July 2022 and 24 July 2022, 33 went into hospital with coronavirus. This shows a decrease of -2.9% compared to the previous 7 days. There were 25 patients in hospital with coronavirus on 26 July 2022.

• Deaths in Derbyshire Dales

Between 16 July 2022 and 22 July 2022, there have been 2 deaths within 28 days of a positive coronavirus test. This shows an increase of 100.0% compared to the previous 7 days.

Key statistics from the UK Coronavirus (COVID-19) Dashboard - last updated on Wednesday 27 July 2022.



Latest R range for England

0.9 to 1.2

Latest growth rate range for England

-1% to +3%

per day

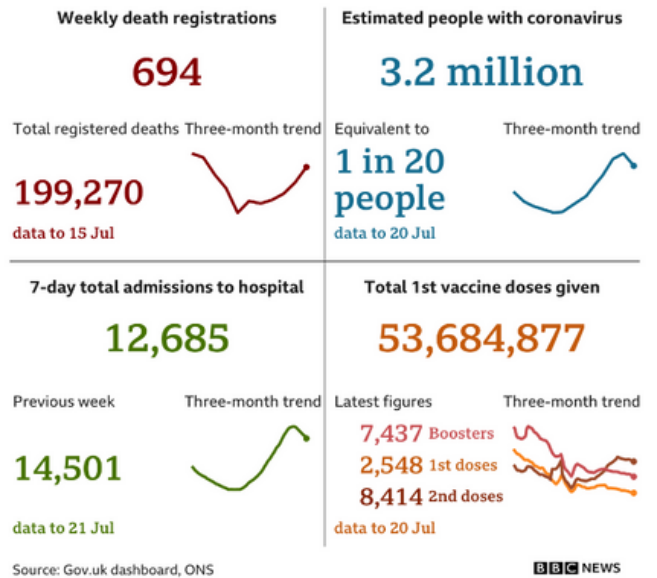
An R value between 0.9 and 1.2 means that, on average, every 10 people infected will infect between 9 and 12 other people.

A growth rate of between -1% and +3% means that the number of new infections could be broadly flat, growing by up to 3% or shrinking by up to 1 every day.

Using the NHS COVID Pass to demonstrate COVID-19 status

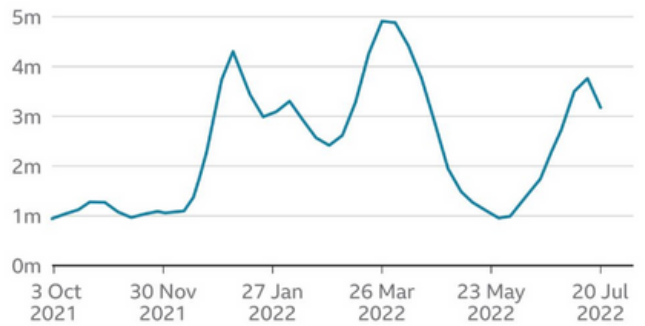
How to use the NHS COVID Pass to demonstrate your coronavirus (COVID-19) status when travelling abroad.

Coronavirus in the UK



UK infections fall for first time since May

Estimated people testing positive for coronavirus



Source: Office for National Statistics, 29 Jul



YOUR HEALTH & WELLBEING - INFORMATION



Derbyshire
Fire & Rescue Service
Public Protection Unit

Do you know a CHARLIE?



Statistics show that certain people **ARE** known to be more at risk from fire in the home. **Do you recognise this person?**

- Care and support needs
- Hoarding and mental health issues
- Alcohol and medication
- Reduced mobility
- Lives alone
- Inappropriate smoking
- Elderly – 65+

If you know someone who displays one or more of these characteristics, get in touch, as statistics show they may be at more risk of fire. To book a Safe & Well Check please call -

Buxton - 01298 608720
High Peak and Derbyshire Dales
Chesterfield - 01246 223500
North East Derbyshire, Chesterfield and Bolsover
Derby - 01332 777850
Derby City, South Derbyshire, Erewash and Amber Valley

Please state the agency you are from, occupiers details, your concerns and any risks to lone workers.



Hoarding: A hoarding disorder is where someone acquires an excessive number of items and stores them in a chaotic manner, usually resulting in unmanageable amounts of clutter. The items can be of little or no monetary value. Hoarding is considered a significant problem if:

- the amount of clutter interferes with everyday living – for example, the person is unable to use their kitchen or bathroom and cannot access rooms
- the clutter is causing significant distress or negatively affecting the quality of life of the person or their family – for example, they become upset if someone tries to clear the clutter and their relationship suffers

Concerned about someone? Ring Call Derbyshire on: **01629 533190**

SARCOMA AWARENESS

There are 2 main types of sarcoma:

- soft tissue sarcoma
- bone sarcoma (also called primary bone cancer).

Each year, about 4,300 people in England are diagnosed with a soft tissue sarcoma, and about 550 people are diagnosed with bone cancer in the UK.

What is the difference between soft tissue sarcoma and bone cancer?

Soft tissue sarcomas start in any supportive or connective tissues. These include:

- fat
- muscle
- nerves
- fibrous tissues
- tendons and ligaments
- blood vessels.
- Bone sarcomas start in the bone.

[Sarcoma UK](#) [Macmillan Cancer Support](#) [NHS - Soft tissue sarcoma](#)

What is sarcoma?

Sarcomas are rare cancers that develop in the supporting tissues of the body. Supporting tissues include bone, cartilage, tendons, fat and muscle.



ASHBOURNE COMMUNITY TRANSPORT

Dial-A-Bus Shopping

Derbyshire Connect provides transport to shopping destinations for people unable to use conventional buses because of age, disability or because they live in areas where public transport is limited.

Derbyshire Connect services, where requested, will provide a weekly trip local communities to a nearby shopping area or supermarket.

Services are door-to-door and passenger assistants are available, on request, for anyone needing extra help.

Runs weekdays, generally between 9am and 4pm and needs to be booked in advance. There are no weekend services.

To book your journey call:
01335 300670

(9am-4pm Monday to Friday)
Book between seven and one day before you want to travel or email:

enquiries@ashbournect.org.uk

Please give 48 hours notice. If you need to use a wheelchair please mention this when booking.

Who is the service for?

Derbyshire Connect is for people of any age who are unable to use conventional bus services because of mobility difficulties or because they live in areas where bus services may be limited. All vehicles can carry passengers in wheelchairs. Gold Card holders can use Derbyshire Connect services free-of-charge.

View timetables for this service;

[Derbyshire Dales timetable](#)

[South Derbyshire timetable](#)

[High Peak timetable](#)

Fares?

Gold Card holders travel for free after 9.30am weekdays.

£2.50 Adult single

£4.50 Adult return

Keeping in touch: If you have any questions, ideas or concerns please email: Rachel@ddcvs.org.uk

DDCVS's bulletin is compiled by the staff of DDCVS from a wide range of information. While every effort is made to check the accuracy of the material, no liability can be accepted for any error or omission. Inclusion of an item in the bulletin does not mean approval or recommendation by DDCVS.